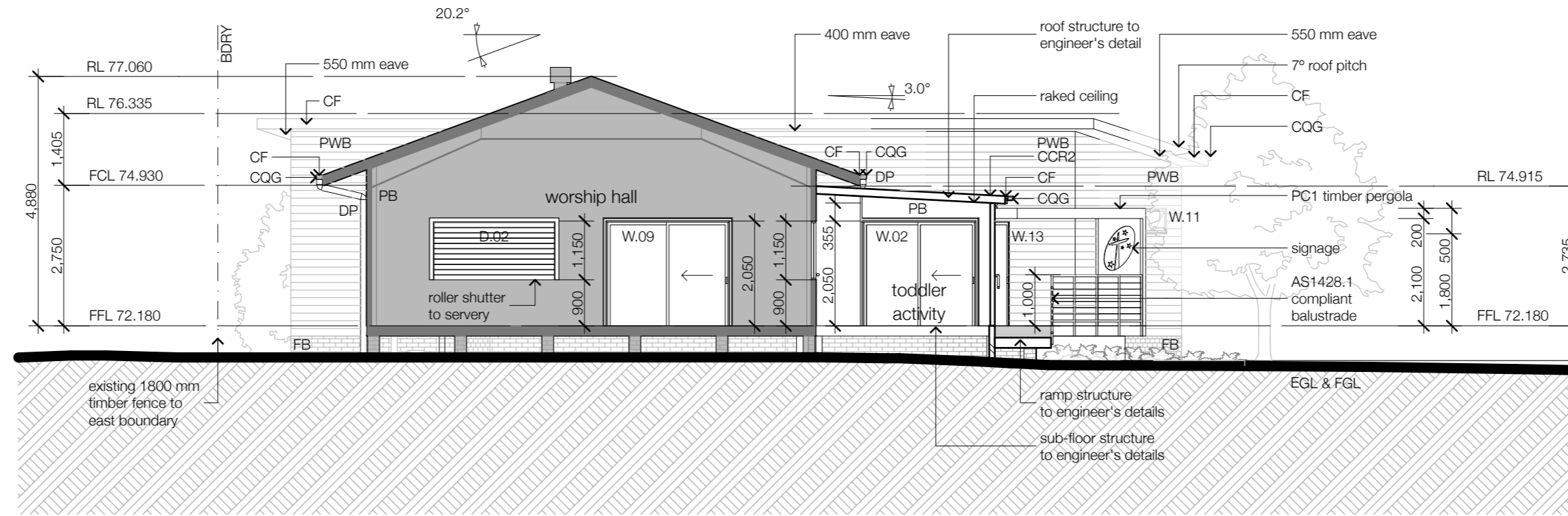


legend

BDRY	boundary
BOE	brick on edge
BPB	bagged painted brickwork
CCR1	corrugated roof sheeting (custom ort)
CCR2	corrugated roof sheeting (trimdek)
CF	colorbond fascia
CFC	compressed fibre cement
CONC	concrete
CJ	control joint
CT	ceramic tile
CPT	carpet
CRT	concrete roof tile
CQG	colorbond quad gutter
DP	downpipe
DP&S	downpipe & spreader
EGL	existing ground line
EMB	electrical meterboard
FB	face brick
FC	fibre cement
FFL	finished floor level
F	fixed glass
FGL	finished ground line
GM	gas meter
HWS	hot water service
PB	plasterboard
PC1	paint colour 1
PC2	paint colour 2
PCR	painted cement render
PFD	painted face brick
FFC	painted fibre cement
PWB	painted weatherboard
RL	relative level
SC	solder course
SD	smoke detector
TC	timbercrete
TFB	timber floor boards
TRC	terracotta roof tiles
VC	vinyl cladding
WM	water meter

b	basin
b/head	bulkhead
dry	dryer
dw	dishwasher
exh	exhaust fan
fr	freezer
fw	floor waste
hr	handrail
lb	letterbox
lth	lift off hinges
m	mirror
mh	man hole
mw	microwave
orh	overhead
p	pantry
ref	refrigerator
rh	rangehood
sh	soap holder
ss	stainless steel sink
st	stove
shwr	shower
t	tub
tgsl	tactile indicator
tw	top of wall
tr	towel rail
trh	toilet role holder
typ.	typical
wc	water closet
wm	washing machine
v	vinyl
vp	vent pipe
uo	under bench oven
wo	wall oven

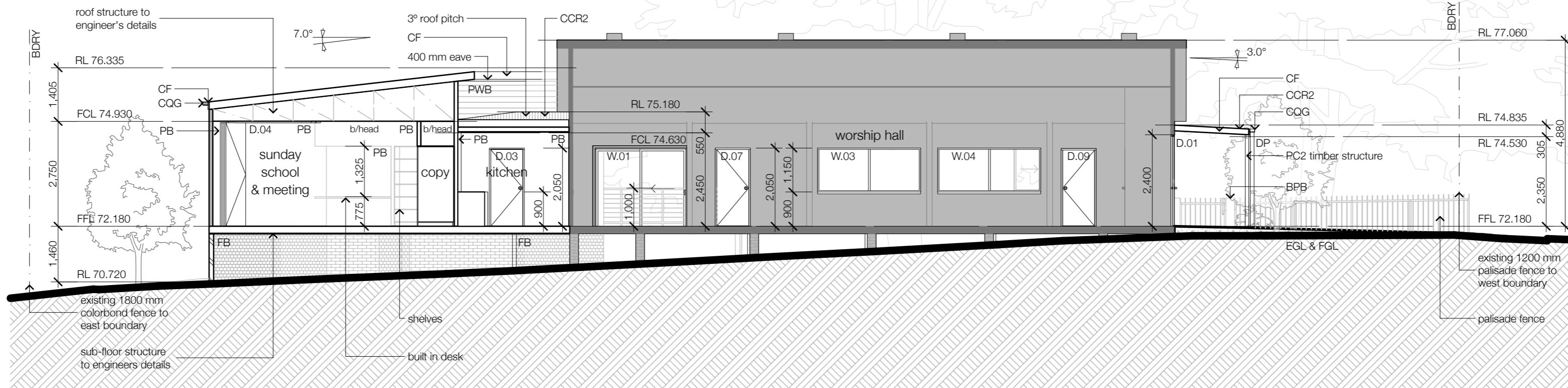


01 section a - a

existing and unchanged

notes

- tracks to sliding and folding door suites shall be recessed into floor structure and finish flush with adjacent floor surfaces
- tiled floor areas shall finish flush with adjacent floor surfaces
- portable fire extinguishers shall be selected, located and distributed in accordance with Sections 1, 2, 3 and 4 of AS2444
- smoke detectors must be installed in accordance with AS1670.1
- HMS shall be instantaneous gas type installed in Smartbox recess box with semi-recess frame and cover (Rinnai or equivalent)
- proposed lightweight external walls shown with a solid grey hatch shall achieve an FRL not less than 60/60/60
- where an external wall requires a FRL, any eave, soffit or projection beyond that wall shall have the same FRL
- ramp and deck shall have a slip resistant finish (R11 min.)
- external walls shall be insulated to achieve a minimum total R-value of 1.8
- floors shall be insulated to achieve a minimum total R-value of 1.5
- air conditioning shall comply with BCA Part J5
- new artificial lighting shall comply with BCA Part J6



02 section b - b

preliminary

not for construction

06/11/09 a issued for combined da | cc
date issue amendments

sections

church facility
alterations and additions

bepc | heffron rd | lalor park

date: 23 | 01 | 09 BEP08051
drawn: pt | sl | tq
checked: amcb
scale: 1:100 @ a2
0 1 2 3 5m issue a